



# #5



# Contemporary Adventurer.

Explore beyond the beaten paths with the multi-purpose smart #5.

# Iconic look, new edge.

The smart #5 takes everything you love about the brand – like frameless doors and that stunning Panoramic Halo Roof – and adds a fresh twist. With bold new details like the boxy design, oblong CyberSparksLED+ lights with Adaptive High Beam Assist, sleek matte finishes, and a cozy oak wood interior trim, it's got style and flexibility in spades. Ready for the city? Ready for the road? You bet.



The Malaysian version may differ from the visuals shown.



# #5

Always in focus:  
with dual digital displays.

With dual ultra-clear 13" AMOLED touchscreens and a crisp 10.25" digital cluster, the smart #5 puts everything you need right at your fingertips – from navigation to entertainment, all in stunning detail. And thanks to day and night modes, it always looks just right, no matter when you drive.

## #5 Highlights

- Panoramic Halo Roof**  
 The Panoramic Halo Roof opens up new perspectives, letting in light to create a sense of space—while the electric roof blind gives you full control, effortlessly blocking heat and 99% of UV radiation when needed.
- Sennheiser Signature Soundsystem**  
 The smart #5 Premium and BRABUS come with a Sennheiser Signature Sound System, featuring 20 speakers, including 1 central raising speaker, and Dolby Atmos for an immersive audio experience.
- Spacious Cargo**  
 The smart #5 offers 1530 liters of storage with the rear seats down and up to 72 liters (or 47 liters for BRABUS) in the frunk, giving you all the space you need for any journey.
- 1-button Comfort Mode**  
 1-Button Comfort Mode: With a single touch from the rear passenger seat (behind the front passenger), the front seat glides forward to its maximum position while the rear seat reclines by up to 10°. Instantly transforming the space into a business-class-style lounge, it delivers maximum legroom and first-class comfort.

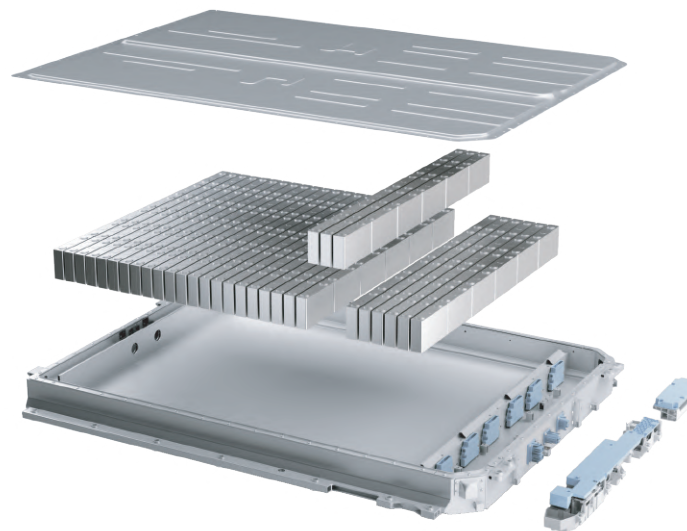
## Exclusive rims for each line



20" Sundial  
Premium



21" Monoblock  
BRABUS



Charge faster.  
Go further.

Thanks to the smart #5's cutting-edge 800-Volt battery technology, you can charge from 10% to 80% in just 15 minutes, giving you more time on the road. With up to 590 km of range on a full charge, it's built for long drives and spontaneous adventures – whether you're in the city or exploring beyond.

# Bold Entry-Level Offering.

High-end features come naturally with every smart #5. From your very first drive, enjoy cutting-edge tech and advanced safety features. The smart #5 impressive range and performance, along with ultra-fast charging capabilities, ensuring you're always ready to go. Inside, a high-definition AMOLED screen delivers an intuitive interface for seamless control, while the Advanced Driver Assistance Systems (ADAS) provide added peace of mind on every journey.

With smart #5, premium is no longer a luxury; it is the new standard.



Range up to

590 km

Top speed

200 km/h

0-100 km/h

6.5 sec

Charging speed

400 kW  
10-80% ~ 15 min

# Set Your Own Standard.

Each smart #5 Line brings its own character with premium features, tailored to your lifestyle.



## Premium

590km  
Range (WLTP)

- RWD, 267 kW
- DC charging up to 400 kW
- AC charging up to 22 kW
- 100 kWh battery
- Frunk size 72L



- Panoramic Halo Roof and Electric Halo Roof Blind
- Gesture tailgate
- CyberSparks LED+ with matrix headlights and adaptive high beam
- Soundproof glass

- 12 Front & Rear parking sensors with Automatic Parking Assist
- 360° Camera
- smart Pilot Assist
- NFC Key Card

- Duo Nappa Leather Seats
- Leather steering wheel
- Electrically adjustable, heated front seats and rear seats
- Ambient Lighting+ (256 colours)
- Automatic 2-zone climate control
- Ventilated Driver and Passenger Seat

- 13" AMOLED dual Central Screen and Passenger screen
- 10.25 inch HD Instrument Cluster
- Augmented Reality Head-Up Display
- Sennheiser® Soundsystem with 20 speakers, 1 central raising speaker and Dolby Atmos technology
- Apple Carplay® & Android Auto
- V2L Capability



## BRABUS

540km  
Range (WLTP)

- AWD, 475 kW
- DC charging up to 400 kW
- AC charging up to 22 kW
- 100 kWh battery
- Frunk size 47L



- Panoramic Halo Roof and Electric Halo Roof Blind
- Gesture tailgate
- CyberSparks LED+ with matrix headlights and adaptive high beam
- Soundproof glass
- Sporty Bodystyle and BRABUS Badges
- Red painted brake callipers

- 12 Front and Rear Parking Sensors with Automatic Parking Assist
- 360° Camera
- smart Pilot Assist
- NFC Key Card

- Dinamica® seats
- Alcantara® Sports-style steering wheel
- Electrically adjustable, heated front seats and rear seats
- Ambient Lighting+ (256 colours)
- Automatic 2-zone climate control
- BRABUS exclusive interior color
- Ventilated Driver and Passenger Seat

- 13" AMOLED dual Central Screen and Passenger screen
- 10.25 inch HD Instrument Cluster
- Augmented Reality Head-Up Display
- Sennheiser® Soundsystem with 20 speakers, 1 central raising speaker and Dolby Atmos technology
- Apple Carplay® & Android Auto
- V2L Capability
- Simulated Engine Sound

# The intelligent adventurer.

The smart #5 is ready for any adventure. Equipped with adaptive all-wheel drive and multiple driving modes, it seamlessly shifts from smooth highways to rugged trails. Whether it's exploring off-road paths or navigating the city, the smart #5 is always up for more.



Multi-mode drive system



Camping mode



Vehicle to load

Trailer Hitch

- **Multi-mode drive system**

From efficient to adventurous – smart #5 adapts to you. Switch between drive modes, enjoy AWD off-road, and fine-tune braking from classic to one-pedal.

**Sand** – Maintains traction on loose surfaces.

**Mud** – Stability on slippery, uneven ground.

**Snow** – Grip and smooth drive on ice.

**Adaptive** (Premium & BRABUS)

Auto-adjusts to changing conditions.

**Rock** – Confident handling on rocky paths.

- **Camping mode**

Turn your smart #5 into the perfect outdoor retreat with Camping Mode. Choose from three bed configurations to match your adventure:

**Big Bed:** Up to 1.4 m x 2.7 m maximum space for two.

**Double Bed:** Up to 1.4 m x 2.1 m cozy and comfortable.

**Single Bed:** Up to 0.6 m x 2.7 m perfect for solo traveller.

- **Vehicle-to-load**

Make your smart #5 a mobile power bank with V2L. Whether you're charging your e-bike, powering an electric camping light, or running other devices, the car's battery provides the energy you need.

## A worry-free electric experience

### Warranty package

Confidence comes standard with the smart #5. Enjoy :

- 4 years of unlimited mileage vehicle warranty.
- 8 years or 200,000km high-voltage battery warranty
- 8 years or 150,000km high-voltage component warranty.
- 2 years unlimited mileage spare parts warranty.
- 24/7 - roadside assistance included.

The BRABUS



# MADE TO STAND OUT.

The BRABUS Line is the boldest edition of every smart model – an outstanding peak performer with BRABUS DNA and attitude. Always premium, powerful, unsurpassed. A no-compromise collaboration that is both bold and athletic, yet effortlessly unconventional.

It combines exclusive comfort with a wealth of premium features, setting a new standard in distinctive design.



# The BRABUS

## BRABUS Features

- Sporty BRABUS body kit
- 0-100 km in 3.8 sec
- BRABUS exclusive rims
- Alcantara® Sports-style steering wheel
- BRABUS exclusive interior colour
- Dinamica® seats
- Simulated engine sounds
- Red painted brake callipers





Register Your Interest.



The Malaysian version may differ from the visuals shown. Actual model, features and specifications may vary in detail from image shown. Subject to change without prior notice. All illustrations are for information purposes only and may show optional extras. Color deviations are possible for production reasons or due to 3D and lighting effects in the illustrations. Energy consumption combined in kWh/100 km (WLTP): 18.4(Pro+ /Premium), 18.5 (Pro), 19.9 (BRABUS/Pulse/Summit Edition); CO2 emissions combined (while the car is in operation) in g/km (WLTP): 0; CO2 class: A; electric range (WLTP) in km: 590(Pro+ /Premium), 465 (Pro), 540(BRABUS/Pulse/Summit Edition); The values were determined according to the prescribed measurement procedure. The data do not refer to an individual vehicle and are not part of the offer but serve solely for comparison purposes between different vehicle types. The values vary depending on the optional equipment selected. The specified CO2 emissions are only relate to the operation of the vehicle; CO2 emissions that are generated or avoided through the production and provision of the vehicle and the energy source are not taken into account when calculating according to WLTP. The ranges determined according to the standard WLTP also include the measured range achieved through recuperation (energy recovery during braking). Individual driving style and behavior, speed, acceleration behavior, outside temperature, topography and the use of electric vehicles have an influence on the actual range and may reduce or even increase it under certain circumstances. Depending on driving conditions, the value may deviate from the stated value. Under optimal conditions, it is possible to charge smart #5 from 10-80% at a 400 kW DC fast charging station while #5 Pro line you can charge from 10% - 80% at a 150 kW DC fast charging station in less than 30 minutes. The available drive power in battery-powered electric cars depends on various factors, such as the duration of the required power as well as the battery voltage and temperature. Due to the physical framework conditions, the maximum power for the specified acceleration values can be called up repeatedly, but not any number of times in succession. All smart driver assistance and safety systems are aids and do not release the user from his responsibility as a driver. Observe the information in the operating instructions and the system limits described there. smart offers the convenience of remote control functionality via mobile phones for all vehicle models. Standardised basic functions are included in all offers. Extended Connected functions are only available on request and at extra cost. All premium connectivity functions require a paid subscription, including an extended connectivity volume. The current compatibility of the smart mobile phone app for iOS/Android operating systems can be found in the description of the hello smart app in the respective app store. To be operational, prior registration at [id.smart.com](https://id.smart.com) is required. The smart terms of use and licence conditions apply to all remote services. Compatible phone and compatible active data plan required. More information on Apple CarPlay at <https://www.apple.com/ios/carplay> and on Android Auto at <https://g.co/androidauto/requirements>. Apple and Apple CarPlay are trademarks of Apple Inc. Android Auto is a trademark of Google LLC. Please avoid dangerous traffic situations and observe the applicable laws and regulations and the User Manual.

### Contemporary Adventurer.

Proton New Energy Technology Sdn. Bhd.  
(202201030092 (1475789-X))  
Contact our authorised dealers  
Visit [my.smart.com](https://my.smart.com)  
smart Care  
1-800-22-8877

